

CUROSURF USER'S GUIDE

Storage, Preparation and
Administration of CUROSURF®
Intratracheal Suspension

STORAGE AND PREPARATION

How Supplied

CUROSURF® (poractant alfa) Intratracheal Suspension is available in sterile, ready-to-use rubber-stoppered clear glass vials containing 1.5 mL [120 mg surfactant (extract) or 3.0 mL (240 mg surfactant (extract))] of suspension. One vial per container.

NDC Numbers: 10122-510-01 [1.5 mL]
10122-510-03 [3.0 mL]



Storage

- Store CUROSURF in a refrigerator at +2 to +8°C (36-46°F).
- Protect from light

Preparation

- Before use, the vial should be slowly warmed to room temperature and gently turned upside down, in order to obtain a uniform suspension.
- DO NOT SHAKE
- Unopened vials of CUROSURF may be warmed to room temperature for up to 24 hours prior to use.
- CUROSURF should not be warmed to room temperature and returned to the refrigerator more than once.
- Vials are for single use only. After opening the vial discard the unused portion of the drug.

DOSING

Initial Recommended Dose

The recommended dose of CUROSURF is 2.5 mL/kg birth weight. This dose may be determined from the CUROSURF dosing chart on the back of this booklet.

Repeat doses

Up to two repeat doses of 1.25 mL/kg birth weight each may be administered, using the same techniques described for the initial dose. Repeat doses should be administered, at approximately 12-hour intervals, in infants who remain intubated and in whom RDS is considered responsible for their persisting or deteriorating respiratory status. The maximum recommended total dose (sum of the initial and up to two repeat doses) is 5 mL/kg birth weight.

Dosing precautions

Transient episodes of bradycardia, decreased oxygen saturation, reflux of the surfactant into the endotracheal tube, and airway obstruction have occurred during the dosing procedure of CUROSURF.

These events require interrupting the administration of CUROSURF and taking the appropriate measures to alleviate the condition. After stabilization, dosing may resume with appropriate monitoring.

Overdosage

There have been no reports of overdosage following the administration of CUROSURF. In the event of accidental overdosage, and only if there are clear clinical effects on the infant's respiration, ventilation, or oxygenation, as much of the suspension as possible should be aspirated and the infant should be managed with supportive treatment, with particular attention to fluid and electrolyte balance.

ADMINISTRATION

General Overview

CUROSURF® (poractant alfa) Intratracheal Suspension is available intratracheally by two different methods:

- Through a 5 French end-hole catheter after briefly disconnecting the endotracheal tube from the ventilator.
- Through the secondary lumen of a dual lumen endotracheal tube without interruption of mechanical ventilation.

Before administering CUROSURF, assure proper placement and patency of the endotracheal tube. At the discretion of the clinician, the endotracheal tube may be suctioned before administering CUROSURF. The infant should be allowed to stabilize before proceeding with dosing.

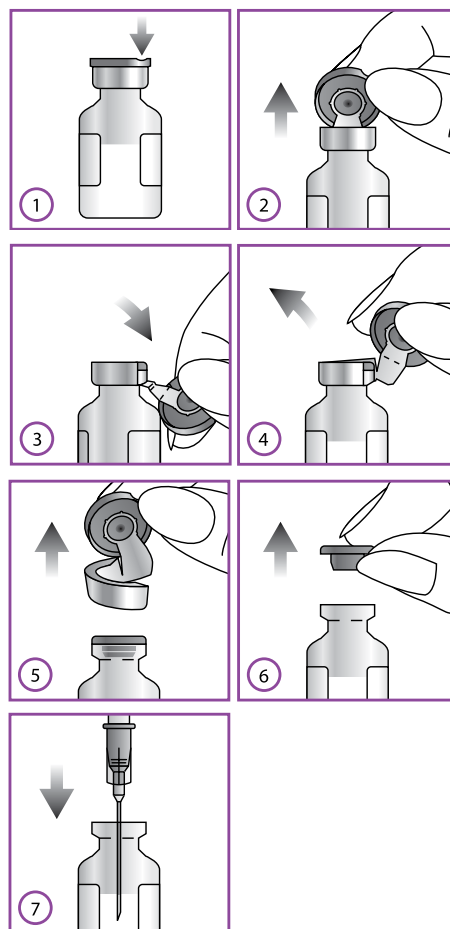
Directions for use

Immediately before CUROSURF administration, the ventilator settings should be adjusted to:

- Rate – 40-60 breaths/minute.
- Inspiratory time – 0.5 seconds.
- Supplemental oxygen – sufficient to maintain $SaO_2 > 92\%$.
- Determine the total dose of CUROSURF to be administered based on weight
 - If using a 5 French catheter, this dose will be divided in half and administered in 2 equal aliquots.
 - If using the secondary lumen of a dual lumen endotracheal tube, the dose can be administered in a single bolus.

Opening Vials of CUROSURF

- 1) Locate the notch (FLIP UP) on the colored plastic cap.
- 2) Lift the notch and pull upwards.
- 3) Pull the plastic cap with the aluminium portion downwards.
- 4 – 5) Remove the whole ring by pulling off the aluminium wrapper.
- 6 – 7) Remove the rubber cap to extract content.
Slowly withdraw the entire contents of the vial of CUROSURF surfactant into a 3-mL or 5-mL plastic syringe through a large-gauge needle (at least 20 gauge)



ADMINISTRATION

If Using a 5 French End-hole Catheter

- Attach a pre-cut 8-cm 5 end-hole French catheter to the syringe.
- Fill the catheter with CUROSURF® (poractant alfa) Intratracheal Suspension
 - Discard excess CUROSURF through the catheter so that only the total dose to be given remains in the syringe.
- While keeping the infant in a neutral position (head and body in alignment without inclination), briefly disconnect the endotracheal tube from the ventilator.
- Insert the pre-cut 5 French catheter into the endotracheal tube and instill the first aliquot (1.25 mL/kg birth weight) of CUROSURF.
- The infant should be positioned such that either the right or left side is dependent for this aliquot.
- After the first aliquot is instilled, remove the catheter from the endotracheal tube and manually ventilate the infant with 100% oxygen at a rate of 40-60 breaths/minute for one minute.
- When the infant is stable, reposition the infant such that the other side is dependant and administer the remaining aliquot using the same procedures.
- Do not suction airways for 1 hour after surfactant instillation unless signs of significant airway obstruction occur.

After completion of the dosing procedure, resume usual ventilator management and clinical care. In the clinical trials, ventilator management was modified to maintain a PaO₂ of about 55 mmHg, PaCO₂ of 35-45, and pH >7.3.

If Using a Dual Lumen Endotracheal Tube

- Do not attach 5 French end-hole catheter to the syringe.
- Keep the infant in a neutral position (head and body in alignment without inclination).
- Administer CUROSURF through the proximal end of the secondary lumen of the endotracheal tube as a single dose, given over 1 minute, and without interrupting mechanical ventilation.

After completion of this dosing procedure, ventilatory management may require transient increases in FiO₂, ventilatory rate, or PIP.

SAFETY INFORMATION

Indication

CUROSURF is indicated for the treatment (rescue) of Respiratory Distress Syndrome (RDS) in premature infants. CUROSURF reduces mortality and pneumothoraces associated with RDS.

Important Safety Information

CUROSURF is intended for intratracheal use only. THE ADMINISTRATION OF EXOGENOUS SURFACTANTS, INCLUDING CUROSURF, CAN RAPIDLY AFFECT OXYGENATION AND LUNG COMPLIANCE. Therefore, infants receiving CUROSURF should receive frequent clinical and laboratory assessments so that oxygen and ventilatory support can be modified in response to respiratory changes.

CUROSURF should only be administered by those trained and experienced in the care, resuscitation, and stabilization of preterm infants.

TRANSIENT ADVERSE EFFECTS SEEN WITH THE ADMINISTRATION OF CUROSURF INCLUDE BRADYCARDIA, HYPOTENSION, ENDOTRACHEAL TUBE BLOCKAGE, AND OXYGEN DESATURATION. These events require stopping CUROSURF administration and taking appropriate measures to alleviate the condition. After the patient is stable, dosing may proceed with appropriate monitoring.

Please see accompanying full prescribing information.

Package Insert Here

CUROSURF DOSING CHART

CUROSURF® (poractant alfa) Intratracheal Suspension Dosing Chart

Weight (grams)	Initial Dose 2.5 mL/kg		Repeat Dose 1.25 mL/kg	
	Each Dose (mL)	Each Dose (mg)	Each Dose (mL)	Each Dose (mg)
600-650	1.6	128	0.8	64
651-700	1.7	136	0.85	68
701-750	1.8	144	0.9	72
751-800	2.0	160	1.0	80
801-850	2.1	168	1.05	84
851-900	2.2	176	1.1	88
901-950	2.3	184	1.15	92
951-1000	2.5	200	1.25	100
1001-1050	2.6	208	1.3	104
1051-1100	2.7	216	1.35	108
1101-1150	2.8	224	1.4	112
1151-1200	3.0	240	1.5	120
1201-1250	3.1	248	1.55	124
1251-1300	3.2	256	1.6	128
1301-1350	3.3	264	1.65	132
1351-1400	3.5	280	1.75	140
1401-1450	3.6	288	1.8	144
1451-1500	3.7	296	1.85	148
1501-1550	3.8	304	1.9	152
1551-1600	4.0	320	2.0	160
1601-1650	4.1	328	2.05	164
1651-1700	4.2	336	2.1	168
1701-1750	4.3	344	2.15	172
1751-1800	4.5	360	2.25	180
1801-1850	4.6	368	2.3	184
1851-1900	4.7	376	2.35	188
1901-1950	4.8	384	2.4	192
1951-2000	5.0	400	2.5	200

Please see accompanying full prescribing information.

For more information about CUROSURF, please call (888) 466-6505 or contact your CUROSURF sales representative.

CUROSURF® is a registered trademark of Chiesi Farmaceutici, S.p.A.

©2010 Cornerstone Therapeutics Inc. All rights reserved.

Printed in USA. 07/10. CTC1432B0710

Under license of:





**(poractant alfa)
Intratracheal Suspension**

DESCRIPTION

CUROSURF® (poractant alfa) Intratracheal Suspension is a sterile, non-pyrogenic pulmonary surfactant intended for intratracheal use only. It is an extract of natural porcine lung surfactant consisting of 99% polar lipids (mainly phospholipids) and 1% hydrophobic low molecular weight proteins (surfactant associated proteins SP-B and SP-C).

It is suspended in 0.9% sodium chloride solution. The pH is adjusted as required with sodium bicarbonate to a pH of 6.2 (5.5 - 6.5).

CUROSURF contains no preservatives.

CUROSURF is a white to creamy white suspension of poractant alfa. Each milliliter of suspension contains 80 mg of surfactant (extract) that includes 76 mg of phospholipids and 1 mg of protein of which 0.45 mg is SP-B.

The amount of phospholipids is calculated from the content of phosphorus and contains 55 mg of phosphatidylcholine of which 30 mg is dipalmitoylphosphatidylcholine.

CLINICAL PHARMACOLOGY

Mechanism of Action

Endogenous pulmonary surfactant reduces surface tension at the air-liquid interface of the alveoli during ventilation and stabilizes the alveoli against collapse at resting transpulmonary pressures. A deficiency of pulmonary surfactant in preterm infants results in Respiratory Distress Syndrome (RDS) characterized by poor lung expansion, inadequate gas exchange, and a gradual collapse of the lungs (atelectasis).

CUROSURF compensates for the deficiency of surfactant and restores surface activity to the lungs of these infants.

Activity

In vitro - CUROSURF lowers minimum surface tension to ≤ 4 mN/m as measured by the Wilhelmy Balance System.

In vivo - In several pharmacodynamic studies, CUROSURF improved lung compliance, pulmonary gas exchange, or survival in premature rabbits.

Pharmacokinetics

CUROSURF is administered directly to the target organ, the lung, where biophysical effects occur at the alveolar surface.

No human pharmacokinetic studies to characterize the absorption, biotransformation, or excretion of CUROSURF have been performed.

Non-clinical studies have been performed to evaluate the disposition of phospholipids present in CUROSURF.

Animal Metabolism

In both adult and newborn rabbits, approximately 50% of the radiolabeled component was rapidly removed from the alveoli in the first three hours after single intratracheal administration of CUROSURF-¹⁴C-DPPC (dipalmitoylphosphatidylcholine).

Over a 24-hour period, approximately 45% of the labeled DPPC was cleared from the lungs of adult rabbits compared to approximately 20% in newborn rabbits.

In newborn rabbits, CUROSURF-¹⁴C-DPPC passed from the alveolar space into the lung parenchyma and then was secreted again into the alveoli, whereas in adult rabbits, most of the DPPC was not recycled.

The half-life in the lung appeared to be about 25 hours in adult rabbits and 67 hours in newborn rabbits.

The concentration of ¹⁴C-DPPC in alveolar macrophages was $\leq 2\%$ of that in the lung in newborn and adult rabbits. Of the total ¹⁴C-DPPC recovered in newborn rabbits, $< 0.6\%$ was found in the serum, liver, kidneys, and brain, respectively, at 48 hours. No information is available about the metabolic rate of the surfactant-associated proteins in CUROSURF.

CLINICAL STUDIES

The clinical efficacy of CUROSURF was demonstrated in one single-dose study (Study 1) and one multiple-dose study (Study 2) in the treatment of established neonatal RDS involving approximately 500 infants. Each study was randomized, multicenter, and controlled. In Study 1, infants 700-2000 g birth weight with RDS requiring mechanical ventilation and a $FiO_2 \geq 0.60$ were enrolled.

CUROSURF 2.5 mL/kg single dose (200 mg/kg) or control (disconnection from the ventilator and manual ventilation for 2 minutes) was administered after RDS developed and before 15 hours of age.

The results from Study 1 are shown below in Table 1.

EFFICACY PARAMETER	SINGLE DOSE CUROSURF n=78 %	CONTROL n=67 %	P-VALUE
MORTALITY at 28 DAYS (ALL CAUSES)	31	48	≤ 0.05
BRONCHOPULMONARY DYSPLASIA*	18	22	N.S.
PNEUMOTHORAX	21	36	≤ 0.05
PULMONARY INTERSTITIAL EMPHYSEMA	21	38	≤ 0.05

*Bronchopulmonary dysplasia (BPD) diagnosed by positive x-ray and supplemental oxygen dependence at 28 days of life.

N.S.: not statistically significant

In Study 2, infants 700-2000 g birth weight with RDS requiring mechanical ventilation and a $FiO_2 \geq 0.60$ were enrolled. In this two-arm trial, CUROSURF was administered after RDS developed and before 15 hours of age, as a single-dose or as multiple doses.

In the single-dose arm, infants received CUROSURF 2.5 mL/kg (200 mg/kg). In the multiple-dose arm, the initial dose of CUROSURF was 2.5 mL/kg (200 mg/kg) and subsequent doses of CUROSURF

were 1.25 mL/kg (100 mg/kg). The results from Study 2 are shown below in Table 2.

EFFICACY PARAMETER	SINGLE-DOSE CUROSURF n=184 %	MULTIPLE-DOSE CUROSURF n=173 %	P-VALUE
MORTALITY at 28 DAYS (ALL CAUSES)	21	13	0.048
BRONCHOPULMONARY DYSPLASIA	18	18	N.S.
PNEUMOTHORAX	17	9	0.03
PULMONARY INTERSTITIAL EMPHYSEMA	27	22	N.S.

N.S.: not statistically significant

ACUTE CLINICAL EFFECTS

As with other surfactants, marked improvements in oxygenation may occur within minutes of the administration of CUROSURF.

INDICATION AND USAGE

CUROSURF is indicated for the treatment (rescue) of Respiratory Distress Syndrome (RDS) in premature infants. CUROSURF reduces mortality and pneumothoraces associated with RDS.

WARNINGS

CUROSURF is intended for intratracheal use only. THE ADMINISTRATION OF EXOGENOUS SURFACTANTS, INCLUDING CUROSURF, CAN RAPIDLY AFFECT OXYGENATION AND LUNG COMPLIANCE. Therefore, infants receiving CUROSURF should receive frequent clinical and laboratory assessments so that oxygen and ventilatory support can be modified to respond to respiratory changes. CUROSURF should only be administered by those trained and experienced in the care, resuscitation, and stabilization of pre-term infants.

TRANSIENT ADVERSE EFFECTS SEEN WITH THE ADMINISTRATION OF CUROSURF INCLUDE BRADYCARDIA, HYPOTENSION, ENDOTRACHEAL TUBE BLOCKAGE, AND OXYGEN DESATURATION. These events require stopping Curosurf administration and taking appropriate measures to alleviate the condition. After the patient is stable, dosing may proceed with appropriate monitoring.

PRECAUTIONS

General

Correction of acidosis, hypotension, anemia, hypoglycemia, and hypothermia is recommended prior to CUROSURF administration. Surfactant administration can be expected to reduce the severity of RDS but will not eliminate the mortality and morbidity associated with other complications of prematurity. Sufficient information is not available on the effects of administering initial doses of CUROSURF other than 2.5 mL/kg (200 mg/kg), subsequent doses other than 1.25 mL/kg (100 mg/kg), administration of more than three total doses, dosing more frequently than every 12 hours, or initiating therapy with CUROSURF more than 15 hours after diagnosing RDS. Adequate data are not available on the use of CUROSURF in conjunction with experimental therapies of RDS, e.g., high-frequency ventilation.

Carcinogenesis, Mutagenesis, Impairment of Fertility

Studies to assess potential carcinogenic and reproductive effects of CUROSURF, or other surfactants, have not been conducted. Mutagenicity studies of CUROSURF, which included the Ames test, gene mutation assay in Chinese hamster V79 cells, chromosomal aberration assay in Chinese hamster ovarian cells, unscheduled DNA synthesis in HELA S3 cells, and in vivo mouse nuclear test, were negative.

ADVERSE REACTIONS

Transient adverse effects seen with the administration of CUROSURF include bradycardia, hypotension, endotracheal tube blockage, and oxygen desaturation. Pulmonary Hemorrhage is a known complication of premature birth and very low birth-weight and has been reported both in clinical trials with Curosurf and in post-marketing adverse event reports in infants who had received Curosurf. The rates of common complications of prematurity observed in Study 1 are shown below in Table 3.

COMPLICATIONS OF PREMATURITY		
	CUROSURF 2.5 mL/kg (200 mg/kg) n=78 %	CONTROL* n=66 %
Acquired Pneumonia	17	21
Acquired Septicemia	14	18
Bronchopulmonary Dysplasia	18	22
Intracranial Hemorrhage	51	64
Patent Ductus Arteriosus	60	48
Pneumothorax	21	36
Pulmonary Interstitial Emphysema	21	38

*Control patients were disconnected from the ventilator and manually ventilated for 2 minutes. No surfactant was instilled.

Immunological studies have not demonstrated differences in levels of surfactant-anti-surfactant immune complexes and anti-CUROSURF antibodies between patients treated with CUROSURF and patients who received control treatment.

FOLLOW-UP EVALUATIONS

Seventy-six infants (45 treated with CUROSURF) were evaluated at 1 year of age and 73 infants (44 treated with CUROSURF) at 2 years of age. Data from follow-up evaluations for weight and

length, persistent respiratory symptoms, incidence of cerebral palsy, visual impairment, or auditory impairment was similar between treatment groups. In 16 patients (10 treated with CUROSURF and 6 controls) evaluated at 5.5 years of age, the developmental quotient, derived using the Griffiths Mental Developmental Scales, was similar between groups.

OVERDOSAGE

There have been no reports of overdosage following the administration of CUROSURF. In the event of accidental overdosage, and only if there are clear clinical effects on the infant's respiration, ventilation, or oxygenation, as much of the suspension as possible should be aspirated and the infant should be managed with supportive treatment, with particular attention to fluid and electrolyte balance.

DOSAGE AND ADMINISTRATION

FOR INTRATRACHEAL ADMINISTRATION ONLY.

General

CUROSURF is administered intratracheally by instillation through a 5 French end-hole catheter, and briefly disconnecting the endotracheal tube from the ventilator. Alternatively, CUROSURF may be administered through the secondary lumen of a dual lumen endotracheal tube without interrupting mechanical ventilation. Before administering CUROSURF, assure proper placement and patency of the endotracheal tube. At the discretion of the clinician, the endotracheal tube may be suctioned before administering Curosurf. The infant should be allowed to stabilize before proceeding with dosing.

Initial Dose

The initial recommended dose of CUROSURF is 2.5 mL/kg birth weight. This dose may be determined from the CUROSURF dosing chart below.

For endotracheal tube instillation using a 5 French end-hole catheter

Slowly withdraw the entire contents of the vial of CUROSURF into a 3 or 5 mL plastic syringe through a large-gauge needle (e.g., at least 20 gauge). Attach the pre-cut 8-cm 5 end-hole French catheter to the syringe. Fill the catheter with CUROSURF. Discard excess CUROSURF through the catheter so that only the total dose to be given remains in the syringe.

Immediately before CUROSURF administration, the infant's ventilator settings should be changed to a rate of 40-60 breaths/minute, inspiratory time 0.5 second, and supplemental oxygen sufficient to maintain $SpO_2 > 92\%$. Keep the infant in a neutral position (head and body in alignment without inclination). Briefly disconnect the endotracheal tube from the ventilator. Insert the pre-cut 5 French catheter into the endotracheal tube and instill the first aliquot (1.25 mL/kg birth weight) of CUROSURF. The infant should be positioned such that either the right or left side is dependent for this aliquot. After the first aliquot is instilled, remove the catheter from the endotracheal tube and manually ventilate the infant with 100% oxygen at a rate of 40-60 breaths/minute for one minute. When the infant is stable, reposition the infant such that the other side is dependent and administer the remaining aliquot using the same procedures. Do not suction airways for 1 hour after surfactant instillation unless signs of significant airway obstruction occur. After completion of the dosing procedure, resume usual ventilator management and clinical care. In the clinical trials, ventilator management was modified to maintain a PaO_2 of about 55 mmHg, $PaCO_2$ of 35-45, and $pH > 7.3$.

For endotracheal instillation using the secondary lumen of a dual lumen endotracheal tube

Slowly withdraw the entire contents of the vial of CUROSURF into a 3 or 5 mL plastic syringe through a large-gauge needle (e.g., at least 20 gauge). Do not attach 5 French end-hole catheter. Keep the infant in a neutral position (head and body in alignment without inclination). Administer CUROSURF through the proximal end of the secondary lumen of the endotracheal tube as a single dose, given over 1 minute, and without interrupting mechanical ventilation. After completion of this dosing procedure, ventilatory management may require transient increases in FiO_2 , ventilatory rate, or PIP.

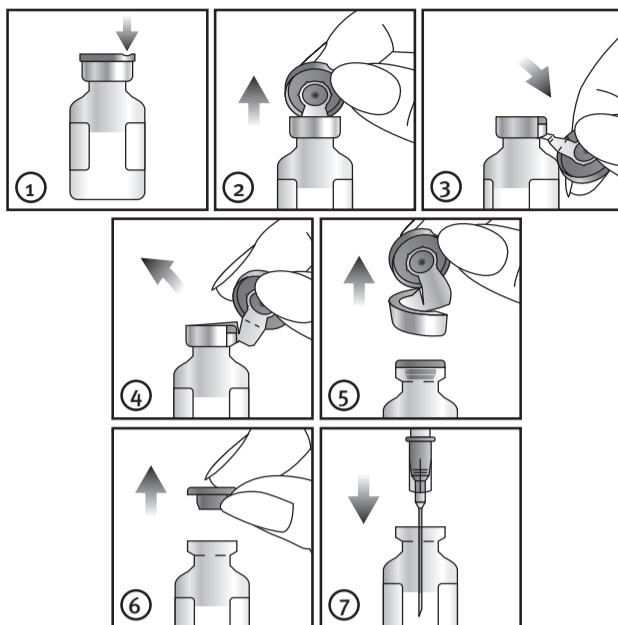
Repeat doses

Up to two repeat doses of 1.25 mL/kg birth weight each may be administered, using the same techniques described for the initial dose. Repeat doses should be administered, at approximately 12-hour intervals, in infants who remain intubated and in whom RDS is considered responsible for their persisting or deteriorating respiratory status. The maximum recommended total dose (sum of the initial and up to two repeat doses) is 5 mL/kg.

WEIGHT (grams)	INITIAL DOSE	REPEAT DOSE	WEIGHT (grams)	INITIAL DOSE	REPEAT DOSE
	2.5mL/kg	1.25mL/kg		2.5mL/kg	1.25mL/kg
EACH DOSE (mL)			EACH DOSE (mL)		
600-650	1.60	0.80	1301-1350	3.30	1.65
651-700	1.70	0.85	1351-1400	3.50	1.75
701-750	1.80	0.90	1401-1450	3.60	1.80
751-800	2.00	1.00	1451-1500	3.70	1.85
801-850	2.10	1.05	1501-1550	3.80	1.90
851-900	2.20	1.10	1551-1600	4.00	2.00
901-950	2.30	1.15	1601-1650	4.10	2.05
951-1000	2.50	1.25	1651-1700	4.20	2.10
1001-1050	2.60	1.30	1701-1750	4.30	2.15
1051-1100	2.70	1.35	1751-1800	4.50	2.25
1101-1150	2.80	1.40	1801-1850	4.60	2.30
1151-1200	3.00	1.50	1851-1900	4.70	2.35
1201-1250	3.10	1.55	1901-1950	4.80	2.40
1251-1300	3.20	1.60	1951-2000	5.00	2.50

Directions for Use

CUROSURF should be inspected visually for discoloration prior to administration. The color of CUROSURF is white to creamy white. CUROSURF should be stored in a refrigerator at +2 to +8°C (36-46°F). Before use, the vial should be slowly warmed to room temperature and gently turned upside-down, in order to obtain a uniform suspension. DO NOT SHAKE.



- 1) Locate the notch (FLIP UP) on the colored plastic cap.
- 2) Lift the notch and pull upwards.
- 3) Pull the plastic cap with the aluminium portion downwards.
- 4 and 5) Remove the whole ring by pulling off the aluminium wrapper.
- 6 and 7) Remove the rubber cap to extract content.

Unopened, unused vials of CUROSURF that have warmed to room temperature can be returned to refrigerated storage within 24 hours for future use.

Do not warm to room temperature and return to refrigerated storage more than once. Protect from light. Each single-use vial should be entered only once and the vial with any unused material should be discarded after the initial entry.

Dosing Precautions

Transient episodes of bradycardia, decreased oxygen saturation, reflux of the surfactant into the endotracheal tube, and airway obstruction have occurred during the dosing procedure of CUROSURF.

These events require interrupting the administration of CUROSURF and taking the appropriate measures to alleviate the condition. After stabilization, dosing may resume with appropriate monitoring.

How Supplied

CUROSURF® (poractant alfa) Intratracheal Suspension (NDC Numbers: 10122-510-01 [1.5 mL]; 10122-510-03 [3 mL]) is available in sterile, ready-to-use rubber-stoppered clear glass vials containing 1.5 mL [120 mg surfactant (extract)] or 3 mL (240 mg surfactant (extract)) of suspension. One vial per carton.

Store CUROSURF Intratracheal Suspension in a refrigerator at +2 to +8°C (36-46°F). Unopened vials of CUROSURF may be warmed to room temperature for up to 24 hours prior to use.

CUROSURF should not be warmed to room temperature and returned to the refrigerator more than once. PROTECT FROM LIGHT. Do not shake. Vials are for single use only. After opening the vial discard the unused portion of the drug.

Rx only.



Manufactured for:
Cornerstone Therapeutics Inc.
Cary, NC 27518

Manufactured by and licensed from:



Chiesi Farmaceutici, S.p.A.
Parma, Italy 43100